



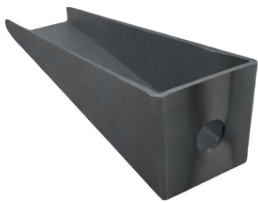
ART-258



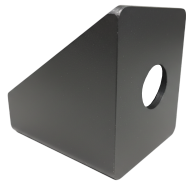
ART-259



ART-260



ART-280



ART-281

**1999-2006
2011-2018
CHEVY SILVERADO
GMC SIERRA
BED MOUNT**

**IMPORTANT: Read and understand the General Instructions
Before Installing SafeTCap® Frame Repair Kits**

Repair one side at a time for reference. Always disconnect your negative cable from battery terminal before welding to your vehicle.

- 1)** Raise the bed for access or detach it.
- 2)** Get a few measurements vertically and horizontally for the center hole of the mount.
- 3)** Remove and cut away old bed mount.
- 4)** Clean and sand down area to bare metal.
- 5)** Locate new mount in position with measurements taken.
- 6)** Tack weld mount to the frame.
- 7)** Double check if the mount is in the correct location. Test with truck bed back in position. When satisfied Weld all perimeters 100%.
- 8)** Apply a rust-inhibiting primer, paint, or undercoating to your mount.