

# ART-142 Installation Instructions

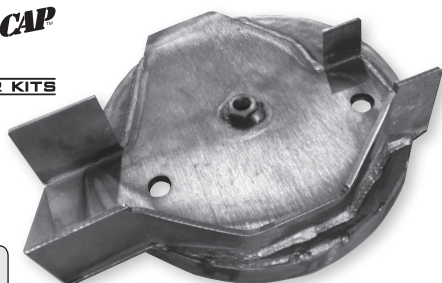
## Rear Upper Coil Spring Plate w/Frame Mount



1997-2006 Wrangler TJ



We Make it Easy to Make it Safe!



ART-142

This SafeTCap™ kit is designed to slip over the stock frame providing you with the affordable DIY solution to serious frame rot issues. Safe-T-Cap™ kits maintain factory dimensions and mounting points while bringing your frame back to a strong, safe and secure state with new, mig-welded steel. SafeTCap™ frame repair kits are guaranteed to fit factory stock frames and are designed and manufactured in the USA.

**Note: Sold as a right, left, or set.**

**CAUTION! If you are not fully confident doing the installation yourself, have a professional welder install it, or at least have one inspect your repairs before you finish coat your SafeTCap™ installation.**

1. IMPORTANT: Read and understand the "General Instructions for Installing Safe-T-Cap™ Frame Repair Kits" before you begin.
2. Before you begin to replace your rusted out upper spring mount you need to inspect your bump stops. If they need replacement purchase them before starting your repair. Note: if you have a lift kit installed, the longer style bump stops (*not included*) are required. (*m10-1.5 nut included*)
3. Jack the vehicle up on the rear axle.
4. Place jack stands under frame in front of rear forward lower control arm mount. [See illustration – A]
5. Remove wheels.
6. Undo lower shock bolts.
7. Lower rear axle via jack.
8. Remove coil springs.
9. Cut away the old upper spring mount being careful not to cut the frame rail.
10. Grind area clean, prep for welding.
11. Make a location mark on the frame 22-1/8" from the center of the rear body mount bolt. [See illustration – B]
12. Place spring mount in position on the frame. [See illustration – B & C]
13. Weld the ART-142 onto frame. [See illustration – C]
14. Reattach bump stop.
15. Jack the rear axle back up until spring is in position.
16. Reinstall lower shock bolt.
17. Reinstall wheels.
18. Raise vehicle high enough to remove jack stands.
19. You're back on the road again!

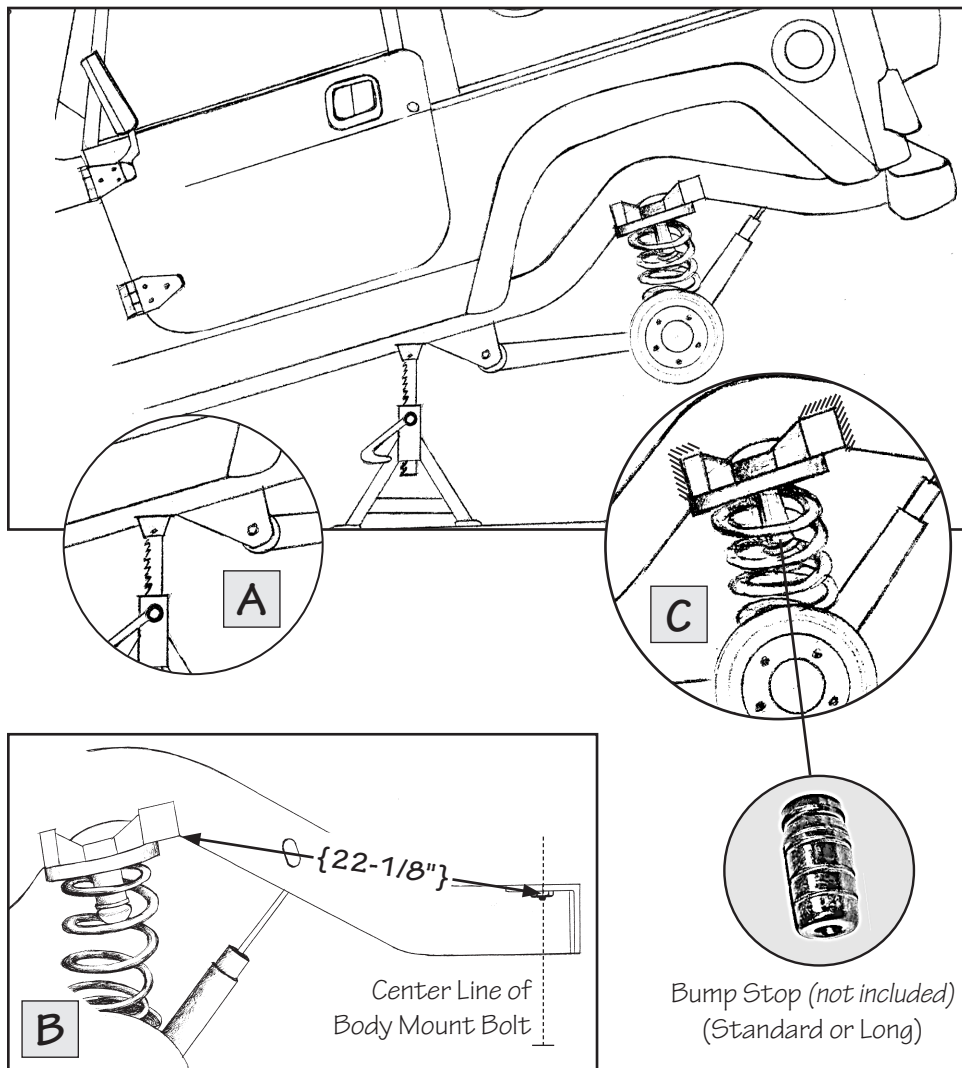
...continued on page 2

# ART-142 Installation Instructions

## Rear Upper Coil Spring Plate w/Frame Mount

 1997-2006 Wrangler TJ

The ART-142 Upper Coil Spring Plate is a heavy duty direct replacement component made from USA steel. The fully welded frame mount attachment makes the installation simple and fast. You can either reuse your existing jounce bumpers (bump stops) or replace them with a new ones (not included); either way the pre-drilled mounting tube and m10-1.5 nut will hold them tight.



Measurement: Bottom Corner of ART-142 to the Center Line of the Body Mount Bolt Head

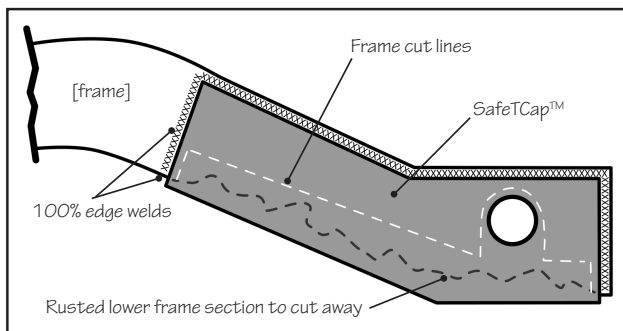
# General Instructions for Installing SafeTCap™ Frame Repair Kits

*General automotive welding safety, metal preparation, and frame repair guidelines to achieve long-lasting results – safely.*

**Attention! For your safety follow all instructions. Failure to follow instruction may result in property damage or serious or fatal injury. User assumes all liability.**

## EQUIPMENT LIST

- Jack Stands/Ramps/Lift
- Quick Line Disconnect
- Eye & Ear Protection
- Work Gloves
- Fire Extinguisher & Water
- Cutting Wheel or Torch
- Grinder or Sander
- Locking Pliers or Clamps
- Welder: Mig or Stick
- Paint & Undercoat



## VEHICLE PREPARATION

1. Disconnect the battery.
2. Check for fuel leaks; tank > lines > engine.
3. Repair or replace any leaky fuel lines before proceeding any further.
4. If the fuel tank leaks, remove it before, repair/replace after installation is complete.
5. Remove fuel tank if within 24" of the welding/repair area.
6. Keep flammable materials at least 20' from the vehicle.
7. Remove interior panels, seats, padding and carpets in the cabin area above work area.
8. Keep a fire extinguisher and water hose close by, use water for any fabric fires.
9. ALWAYS use a Fire Watch Person when cutting or welding on a vehicle. In case of emergency, call 911 immediately.

> General Instructions con't. on page 4



*We Make it Easy to Make it Safe!*

# General Instructions (con't.)

## INSTALLING THE NEW FRAME KIT

1. If you are installing a right/left pair, repair one side at a time, keeping a reference/measuring point.
2. Support vehicle completely over a solid, level floor. Use good quality, weight-rated, safety jack stands, ramps or ideally – a hydraulic lift.
3. Most of our kits are designed to slip over the original frame after the bottom of the frame rust is cut back, and then welded in place. This helps duplicate the original dimensions, and location points, which can be lost if sections are completely removed. This overlapping SafeTCap™ technique is the way we have been successfully repairing frames for over 40 years, providing superior strength while allowing you to complete the job safely and quickly.
4. The bottom of the frame must be cut off and area ground to clean metal – at least half way up the frame. With this method the frame rust is not contaminating your new frame section. The minimum remaining can be no less than 1/2" of the original frame for the SafeTCap™ kit to overlap and perform as designed. Measure, fit, measure, then tack weld SafeTCap™ at key points, the final installation requires complete 100% edge welding, with an assistant acting as a Fire Watch.
5. Some frames have brackets, bumps, stops, etc. that need to be cut off and reused in order to complete the installation. Drill out the factory spot welds on these for cleanest removal.
6. Once welding and wire brushing is finished, brush or spray primer, then paint or undercoating.
7. Inspect the repair yearly.

## SAFETCAP™ ONE YEAR LIMITED WARRANTY

### What Does This Limited Warranty Cover?

This warranty covers any SafeTCap™ product defect or malfunction in your new frame repair component.

### How Long Does The Coverage Last?

This warranty lasts one (1) year from the date of purchase and is nontransferable.

### What Will SafeTCap™ Do?

SafeTCap™ will replace any defective part at no charge. You must pay shipping and all labor charges to remove and reinstall the defective part.

### What Does This Limited Warranty Not Cover?

This limited warranty applies to the SafeTCap™ frame repair components only, and covers any defects in materials and workmanship on the component. SafeTCap™ is not responsible for product failure due to improper installation, or installation on modified frames and vehicles with non-standard retrofitted suspensions. SafeTCap™ is not responsible for the quality of

the installation, or for any issues that may arise beyond the scope of repair for which the part was intended.

Consequential and incidental damages are not recoverable under this warranty. Some states do not allow the exclusion or limitation of incidental or consequential damages, so the above limitation or exclusion may not apply to you.

### How Does State Law Apply?

This warranty gives you specific legal rights; you may also have other rights which vary from state to state.

### How Do You Get Warranty Service?

In order to be eligible for service under this warranty, you must return the SafeTCap™ registration card provided, within 30 days of receipt. You may also register your SafeTCap™ online at [www.safetcap.com](http://www.safetcap.com). To obtain warranty service, please call us toll free at 1-800-407-7024.



*We Make it Easy to Make it Safe!*

**SafeTCap™**

1550 Elmwood Ave.

Cranston, Rhode Island 02910

(401) 944-4444 (800) 407-7024

[www.safetcap.com](http://www.safetcap.com)

(USA)

SafeTCap products are designed and developed by SafeTCap Inc. in response to hundreds of vehicles that have required frame rot repairs. All kits/parts have been developed, manufactured, tested and installed at our Cranston, Rhode Island, USA facilities.

We accept returns within 30 days of receipt of product. Buyer pays return shipping and is subject to a 10% RESTOCKING FEE. To return an order customers need to call 1-800-407-7024 to obtain a RETURN AUTHORIZATION NUMBER. We do not accept returns that have been modified or altered, in any way, from the factory shipped component.

Copyright ©2017 SafeTCap Inc., all rights reserved. SafeTCap is a registered trademark of SafeTCap Inc. and is not affiliated with any vehicle manufacturer for which its products are intended. SafeTCap products are not endorsed by any vehicle manufacturers as OEM frame repair. Jeep, Wrangler, CJ, YJ, TJ, and the Jeep Grille Design are registered trademarks of Fiat Chrysler Automobiles (FCA). SafeTCap Inc., has no affiliation with FCA. Throughout our product line brochures the terms "Jeep," "Wrangler," "CJ," "YJ," and "TJ" are used for identification purposes only.